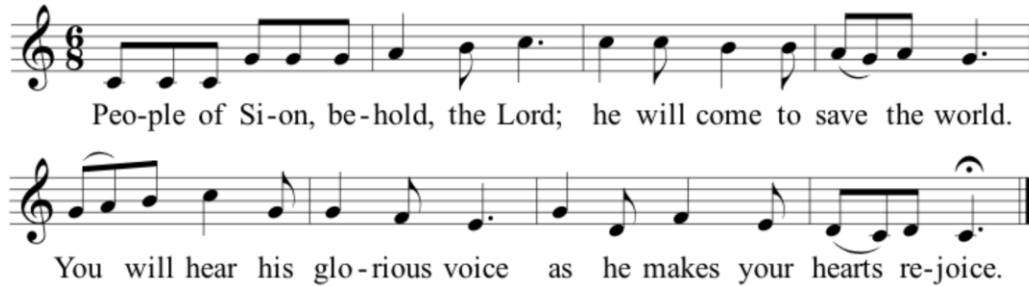


December 9-10, 2023  
2<sup>nd</sup> Sunday in Advent (B)

Cantors: Sat. 5 pm Christina; Sun. 8:30 am Faith; Sun. 10:30 am Amitha; Sun. 12:30 pm Amelie  
Mora – organist/director at all Masses (Alex in Wilmington for “The Nutcracker”)

PRELUDE: Choir or Cantor – *Veni Redemptor Gentium* vs. 3 & 4 **purple sheet (Latin, then English)**

INTROIT: *People of Zion, behold the Lord*



ENTRANCE: *People, Look East (BESANÇON)* JS 297 vs. 1, 2, 4

KYRIE: from *Mass of Charity and Love* (S. Warner) **octavo or single sheet – keep all season**

RESPONSORIAL PSALM: Psalm 85 – *Lord, let us see you kindness (O. Alstott, Respond & Acclaim)*

Optional Descant

Lord, \_ let us see, and grant us your sal - va - tion.

Lord, \_ let us see your kind - ness, and \_ grant us your sal - va - tion.

The image shows musical notation for a Responsorial Psalm in 4/4 time with a key signature of three sharps (F#, C#, G#). It includes an 'Optional Descant' at the beginning. The first staff is a vocal line with the lyrics 'Lord, \_ let us see, and grant us your sal - va - tion.' The second staff is a piano accompaniment with the lyrics 'Lord, \_ let us see your kind - ness, and \_ grant us your sal - va - tion.' The third staff continues the piano accompaniment.

GOSPEL ACCLAMATION: “Alleluia” from “*Missa Veni Emmanuel*” **music sheet – keep all season**

OFFERTORY HYMN: *On Jordan’s Bank (WINCHESTER NEW)* JS 278

MASS ACCLAMATIONS: from *Mass of Charity and Love* (S. Warner) **octavo – keep all season**

COMMUNION ANTIPHON: *Jerusalem, arise! (VENEZ DIVIN MESSIE)* **music sheet ®**

COMMUNION HYMN: *Christ, Be Our Light (B. Farrell)* JS 824 vs. 1, 2, 3, 5

POST-COMMUNION: *Anima Christi* (plainchant)

RECESSIONAL: *Come, O Long Expected Jesus (STUTT GART)* **sing verse below**

Is - rael's strength and con - so - la - tion, Hope of

all the earth thou art; Dear de - sire of eve - ry na - tion,

Joy of eve - ry long - ing heart.

The image shows three staves of musical notation in 4/4 time with a key signature of one flat (Bb). The first staff has a treble clef and the lyrics 'Is - rael's strength and con - so - la - tion, Hope of'. The second staff continues the melody with the lyrics 'all the earth thou art; Dear de - sire of eve - ry na - tion,'. The third staff concludes the phrase with the lyrics 'Joy of eve - ry long - ing heart.'